

# HAND TOOLS & MECHANIC TOOLS

## 22pc Alternator repair kit set ชุดเครื่องมือซ่อมมอเตอร์ 22 ชิ้น

**FORCE**

ฟอร์ซ

- Removes and installs press-on-type belt drive accessory pulleys.
- Applicable: VW, Audi, Seat, Mercedes Benz, Renault, BMW, Ford Renault, Fiat, etc....
- Specification:
 

|  |                       |
|--|-----------------------|
| A. 17mm HEX Socket,                            | B. 22mm HEX Socket    |
| C. 22*28mm HEX Socket,                         | D. 21*28mm HEX Socket |
| E. 19*28mm HEX Socket,                         | F. 35mm Round W/4pin  |
| G. 38mm HEX W/3pin,                            | H. Ø17.6*15mm HEX*33T |
| I. Ø19.2*15mm HEX*33T,                         | J. Ø19.3*22mm HEX*33T |
| K. 3/8" Dr.* M10x72mmL W/ Ø14*12mm HEX*31T     |                       |
| L. 1/2" Dr. * T50x110mmL W/ Ø19.5*17mm HEXx33T |                       |
| M. 1/2" Dr. * M10x110mmL W/ Ø19.5*17mm HEXx33T |                       |
| N. Bit H10 socket W/ 10mm hex drive end        |                       |



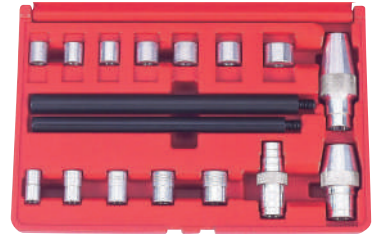
| KT Code    | Model | Weight (g) | Price |
|------------|-------|------------|-------|
| F131-922G3 | 922G3 | 2169       |       |

## 17pc Clutch alignment tool set ชุดเครื่องมือนำศูนย์คลัทช์ 17 ชิ้น

**FORCE**

ฟอร์ซ

- Essential for clutch installation on almost all cars and light-duty trucks. Align clutch plate properly by using tapered cones and pilot adapters.
- Includes seven fractional pilot adapters, one clutch disc centering adapter and one alignment shaft.
- Includes five metric pilot adapters, two clutch disc centering adapters and one alignment shaft.



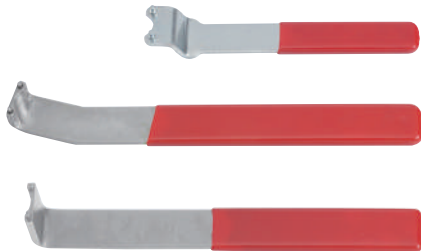
| KT Code    | Model | Weight (g) | Price |
|------------|-------|------------|-------|
| F131-917T2 | 917T2 | 1290       |       |

## Adjusting tensioner belt set ประแรงจูงลูกรอกราวลิ้น

**FORCE**

ฟอร์ซ

- Application: all VAG group.



| KT Code     | Model  | Weight (g) | Price |
|-------------|--------|------------|-------|
| F131-903G15 | 903G15 | 670        |       |

## Belt tool kit for elastic-ribbed belts ชุดเครื่องมือติดตั้งสายพาน Elastic

**FORCE**

ฟอร์ซ

- Suitable for engines with elastic ribbed belts such as Alfa Romeo, BMW, Chrysler, Fiat, Ford, Mercedes, PSA, Seat, Skoda, Smart, Volvo, VW-Audi...etc
- This tool set provides quick easy removal and installation of the new elastic ribbed belts required.



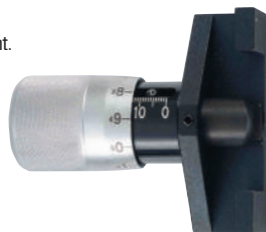
| KT Code    | Model | Weight (g) | Price |
|------------|-------|------------|-------|
| F131-902G9 | 902G9 | 567        |       |

## Universal tensioning gauge for cam belts เกจวัดความตึงของสายพาน

**FORCE**

ฟอร์ซ

- This tensioning gauge can be used to adjust the tension on the cam belts where the movement of the timing belt is measured by load.
- Suitable for use on cam belts with various belt thickness.
- Easy to use.
- Clear incremental marking with knurled knob for precise measurement.
- Dual scale allows reading from top or bottom of tool. (large and small numbers for compatibility)



| KT Code     | Model  | Weight (g) | Price |
|-------------|--------|------------|-------|
| F131-9G0804 | 9G0804 | 338.5      |       |

## Flat band hose clamp pliers คีมหนีบเข็มขัดรัดท่อ แบบทัวไป

**FORCE**

ฟอร์ซ

- Removes and installs new style flat band hose clamps.
- Jaws rotate to grip at any angle.



| KT Code    | Model | Weight (g) | Price |
|------------|-------|------------|-------|
| F131-62518 | 62518 | 250        |       |