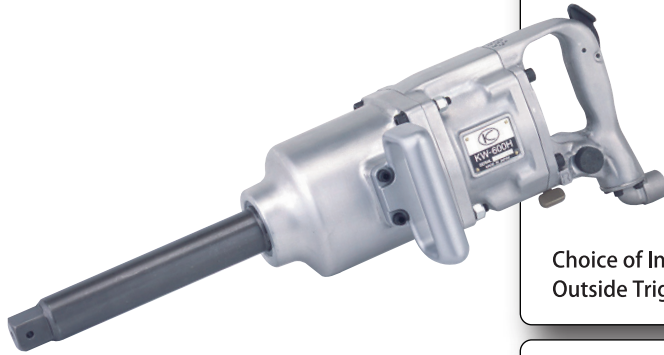


FASTENING TOOL

IMPACT WRENCH



Swing Hammer

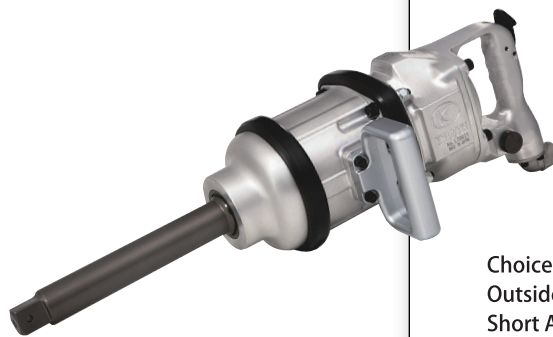
Choice of Inside/
Outside Trigger Handle.

1" (25.4mm) SQ.DR.

KW-600H

Drive Size	1 in.	25.4 mm
Bolt Capacity	2 in.	50.0 mm
Free Speed	2,300 r.p.m.	
Impact Per Min.	480 i.p.m.	
Recommended Torque	370-1,850 ft-lb	500-2,500 Nm
Maximum Torque	2,070 ft-lb	2,800 Nm
Length (w/o socket)	23-5/8 in.	599.0 mm
Weight (w/o socket)	34.8 lbs.	15.8 kg
Air Consumption (normal)	31.8 c.f.m.	0.90 m ³ /min
Hose Size	1/2 in.	12.7 mm

※Performance figures are at 0.62MPa(Pe)(90PSI.)air pressure.



Single Hammer

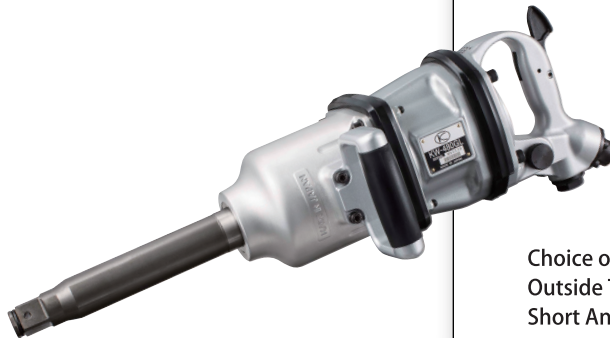
Choice of Inside/
Outside Trigger Handle.
Short Anvil available.

1" (25.4mm) SQ.DR.

KW-500H

Drive Size	1 in.	25.4 mm
Bolt Capacity	2 in.	50.0 mm
Free Speed	3,000 r.p.m.	
Impact Per Min.	600 i.p.m.	
Recommended Torque	370-1,590 ft-lb	500-2,150 Nm
Maximum Torque	1,780 ft-lb	2,400 Nm
Length (w/o socket)	24-13/16 in.	630.0 mm
Weight (w/o socket)	36.7 lbs.	16.7 kg
Air Consumption (normal)	27.9 c.f.m.	0.79 m ³ /min
Hose Size	1/2 in.	12.7 mm
Anvil Length	9-3/16 in.	232.0 mm

※Performance figures are at 0.62MPa(Pe)(90PSI.)air pressure.



Swing Hammer

Choice of Inside/
Outside Trigger Handle.
Short Anvil available.

1" (25.4mm) SQ.DR.

KW-480GL

Drive Size	1 in.	25.4 mm
Bolt Capacity	2 in.	50.0 mm
Free Speed	2,700 r.p.m.	
Impact Per Min.	480 i.p.m.	
Recommended Torque	370-1,630 ft-lb	500-2,200 Nm
Maximum Torque	1,850 ft-lb	2,500 Nm
Length (w/o socket)	24-11/16 in.	626.0 mm
Weight (w/o socket)	37.0 lbs.	16.8 kg
Air Consumption (normal)	26.5 c.f.m.	0.75 m ³ /min
Hose Size	1/2 in.	12.7 mm
Anvil Length (KW-480GL)	8-13/16 in.	223.0 mm

※Performance figures are at 0.62MPa(Pe)(90PSI.)air pressure.

1" (25.4mm) SQ.DR.

KW-45G

Drive Size	1 in.	25.4 mm
Bolt Capacity	1-3/4 in.	45.0 mm
Free Speed	3,000 r.p.m.	
Impact Per Min.	600 i.p.m.	
Recommended Torque	370-1,550 ft-lb	500-2,100 Nm
Maximum Torque	1,740 ft-lb	2,350 Nm
Length (w/o socket)	17-3/8 in.	440.0 mm
Weight (w/o socket)	33.7 lbs.	15.3 kg
Air Consumption (normal)	26.5 c.f.m.	0.75 m ³ /min
Hose Size	1/2 in.	12.7 mm
Anvil Length	1-11/16 in.	42.0 mm

Single Hammer



Choice of Inside/
Outside Trigger Handle.

1" (25.4mm) SQ.DR.

KW-45GL

Drive Size	1 in.	25.4 mm
Bolt Capacity	1-3/4 in.	45.0 mm
Free Speed	3,000 r.p.m.	
Impact Per Min.	600 i.p.m.	
Recommended Torque	370-1,550 ft-lb	500-2,100 Nm
Maximum Torque	1,740 ft-lb	2,350 Nm
Length (w/o socket)	24-13/16 in.	630.0 mm
Weight (w/o socket)	36.7 lbs.	16.7 kg
Air Consumption (normal)	26.5 c.f.m.	0.75 m ³ /min
Hose Size	1/2 in.	12.7 mm
Anvil Length	9-3/16 in.	232.0 mm

Single Hammer



Choice of Inside/
Outside Trigger Handle.

※Performance figures are at 0.62MPa(Pe)(90PSI.)air pressure.

※Performance figures are at 0.62MPa(Pe)(90PSI.)air pressure.