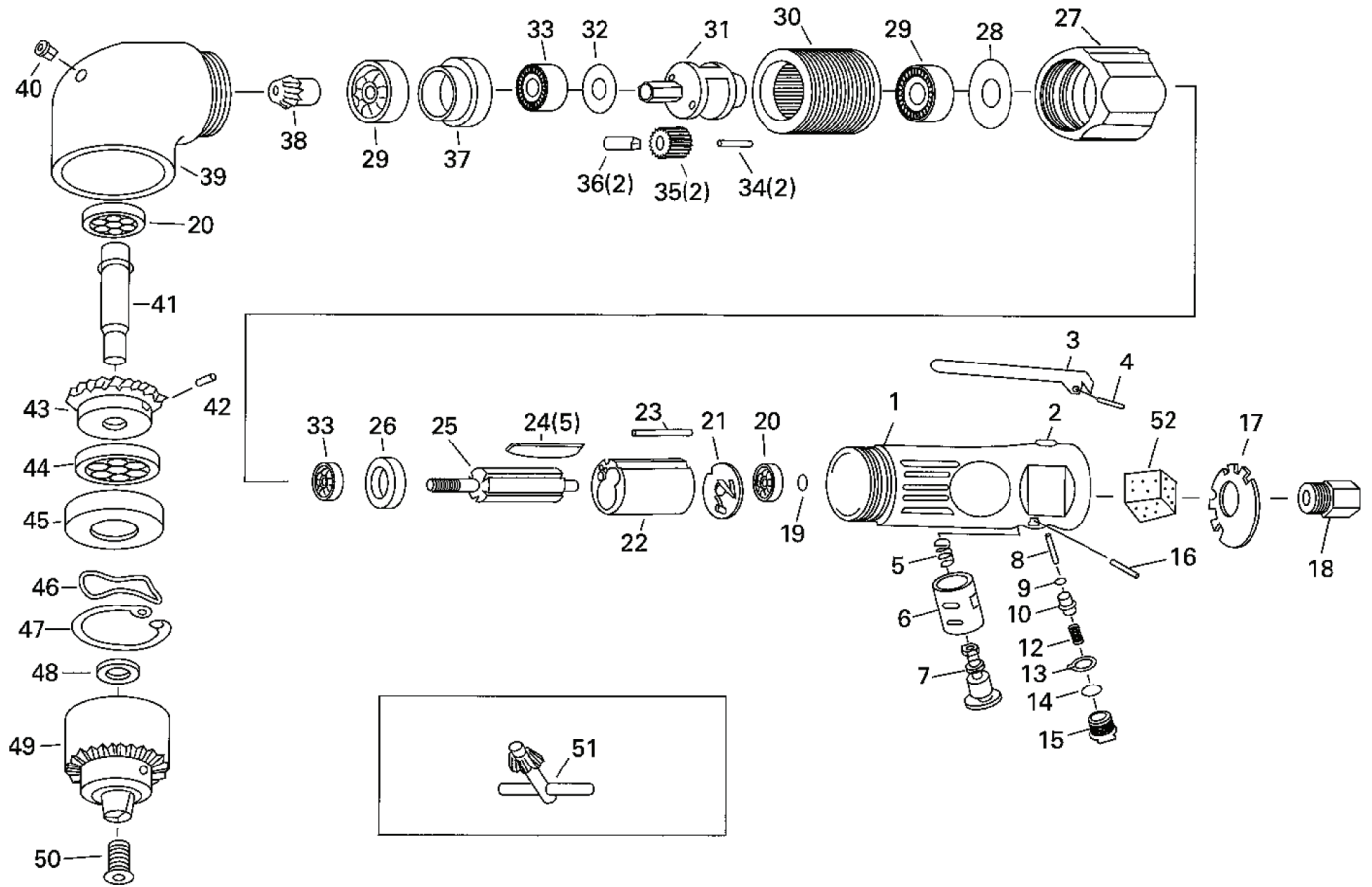


MD-3312B Reversible angle drill

KT-code: T111-0440



No.	KT-Code	Part no.	Description	Required Q'ty
001		T50212010	Housing	1 pc
002		T30704020	Valve bushing	1 pc
003		T30704030	Throttle lever	1 pc
004		T50213280	Spring pin 3x22	1 pc
005	T112-4025	T30704050	Reverse spring	1 pc
006		T30704060	Reverse valve bush	1 pc
007	T112-3972	T30704070	Reverse valve	1 pc
008		T30704080	Roller pin 3.5x34.8	1 pc
009		T50213260	O-ring P-4	1 pc
010		T30704100	Valve stem	1 pc
012		T30704120	Valve spring	1 pc
013	T112-4026	T30704130	Reverse guide	1 pc
014		T50712050	O-ring P-7	1 pc
015		T30704150	Valve screw	1 pc
016		T30704160	Spring pin 2.5x20	1 pc
017		T30704170	Deflector	1 pc
018		T30704180	Air inlet bushing	1 pc
019		T50213170	Snap ring S-6	1 pc
020	T112-3170	T50404100	Bearing 626ZZ	2 pcs
021	T112-3090	T50213150	End plate	1 pc
022	T112-4028	T50213120	Cylinder	1 pc
023	T112-4020	T50213100	Pin	1 pc
024	T112-3110	T50210290	Rotor blade (ราคาเป็น ร้อย/ชุด)	5 pcs
025		T50212250	Rotor	1 pc
026		T50212260	Front end plate	1 pc
027		T50404180	Clamp nut	1 pc

No.	KT-Code	Part no.	Description	Required Q'ty
028	T112-4213	T50404190	Washer	1 pc
029		T50212290	Bearing 6001	2 pcs
030		T50212300	Internal gear	1 pc
031		T50212310	Spindle cage	1 pc
032		T50212320	Washer S	1 pc
033	T112-3285	T50402180	Bearing 608ZZ	2 pcs
034		T50212340	Roller pin 4x13.8	2 pcs
035		T50212350	Planet gear	2 pcs
036		T50212360	Bushing	2 pcs
037		T50212370	Spacer	1 pc
038		T50212380	Pinion	1 pc
039		T50212390	Angle housing	1 pc
040		T50212400	Grease nipple	1 pc
041A		T5021241A	Spindle	1 pc
042		T50212420	Set screw 4x6	1 pc
043		T50212430	Gear	1 pc
044		T50710220	Bearing 6000ZZ	1 pc
045		T50212450	Bearing case	1 pc
046		T50675370	Wave washer WW-23	1 pc
047		T50212470	Retaining ring	1 pc
048	T112-3062	T50213030	Spacer ring	1 pc
049	T112-3056	T50210010	3/8" Drill chuck	1 pc
050A	T112-3064	T5021151A	Chuck screw	1 pc
051		T50210530	3/8" Drill chuck key	1 pc
052		T50210500	Silencer material	1 pc