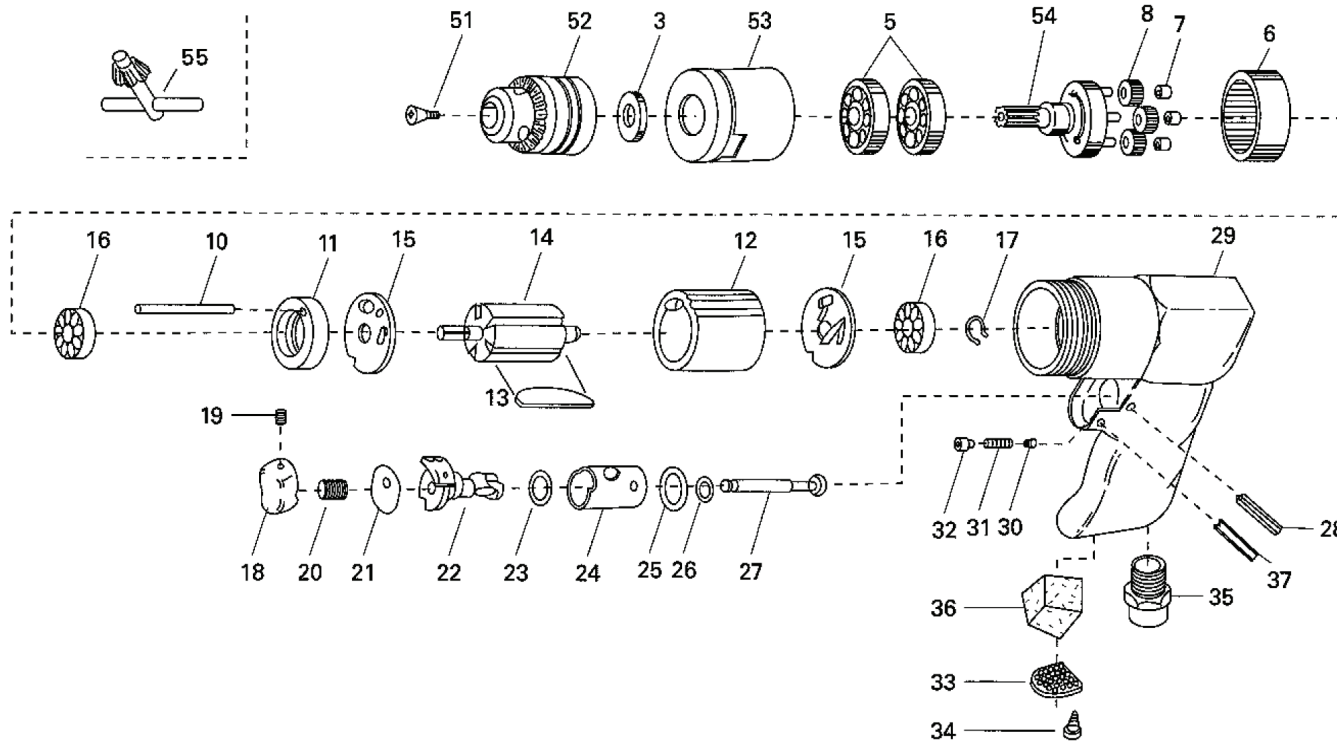


## MD-3311B Air drill

KT-code: T111-0430



No.	KT-Code	Part no.	Description	Required Q'ty
003	T112-3062	T50213030	Spacer ring	1 pc
005		T50213050	Bearing 6201ZZ	2 pcs
006		T50213060	Internal gear B	1 pc
007		T50213070	Bushing	3 pcs
008	T112-3080	T50213080	Planet gear A	3 pcs
010	T112-4020	T50213100	Pin	1 pc
011	T112-3130	T50213110	Spacer	1 pc
012	T112-4028	T50213120	Cylinder	1 pc
013	T112-3110	T50210290	Rotor blade (รอกาบิน รัน/ชุด)	5 pcs
014	T112-3100	T50213140	Rotor	1 pc
015	T112-3090	T50213150	End plate	2 pcs
016	T112-3170	T50404100	Bearing 626ZZ	2 pcs
017		T50213170	Snap ring S-6	1 pc
018		T50213180	Trigger	1 pc
019		T50210520	Set screw M4x4	1 pc
020		T50210430	Spring	1 pc
021		T50213210	Detent cover	1 pc
022		T50213220	Reverse valve	1 pc
023		T50213250	O-ring AS-568	1 pc
024		T50213240	Valve body	1 pc
025		T50213230	O-ring P-12.5	1 pc
026		T50213260	O-ring P-4	1 pc
027		T50213270	Valve stem	1 pc
028		T50213280	Spring pin 3x22	1 pc
029		T50213290	Housing	1 pc
030		T50213300	Detent pin	1 pc
031		T50213310	Spring	1 pc
032		T50213320	Set screw M5	1 pc
033		T50210440	Silencer	1 pc
034		T50210450	Screw 3x8	2 pcs
035	T112-2878	T50210460	Air inlet bushing	1 pc
036		T50210500	Silencer material	1 pc
037		T50213370	Pin 2.5x22	1 pc
051A	T112-3064	T5021151A	Chuck screw	1 pc
052	T112-3056	T50210010	3/8" Drill chuck	1 pc
053		T50211530	Cramp nut	1 pc
054A	T112-3070	T5021154A	Spindle	1 pc
055		T50210530	3/8" Drill chuck key	1 pc