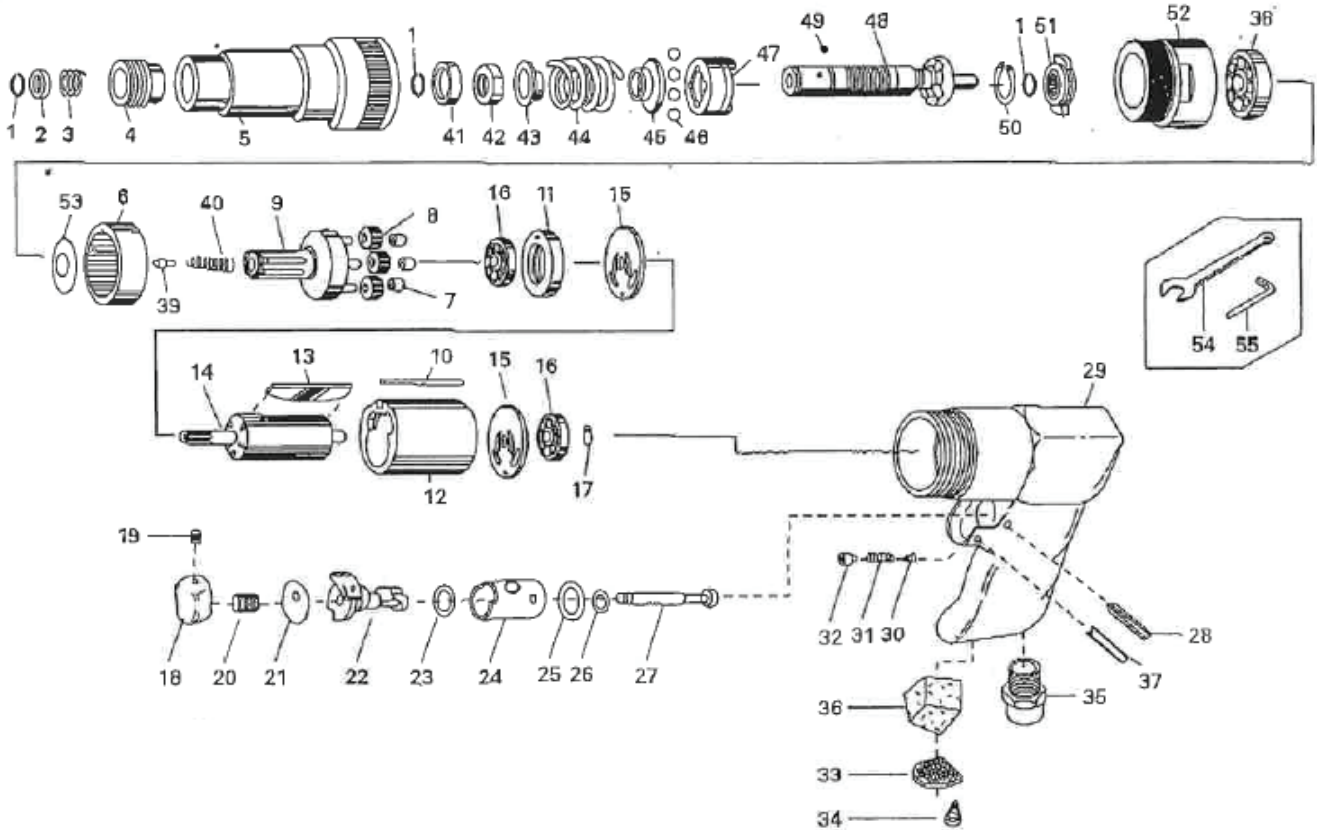


MV-6226B Screw driver

KT-code: T111-0660



No.	KT-Code	Part no.	Description	Required Q'ty
001		T30706350	Retaining ring	3 pcs
002		T30706030	Washer	1 pc
003		T30706370	Spring	1 pc
004		T30706170	Retainer	1 pc
005		T30706160	Clutch housing	1 pc
006		T50213060	Internal gear B	1 pc
007		T50213070	Bushing	3 pcs
008	T112-3080	T50213080	Planet gear A	3 pcs
009		T30706190	Work spindle	1 pc
010	T112-4020	T50213100	Pin	1 pc
011	T112-3130	T50213110	Spacer	1 pc
012	T112-4028	T50213120	Cylinder	1 pc
013	T112-3110	T50210290	Rotor blade (ราคาเป็น ร้อย/ชุด)	5 pcs
014	T112-3100	T50213140	Rotor	1 pc
015	T112-3090	T50213150	End plate	2 pcs
016	T112-3170	T50404100	Bearing 626ZZ	2 pcs
017		T50213170	Snap ring S-6	1 pc
018		T50213180	Trigger	1 pc
019		T50210520	Set screw M4x4	1 pc
020		T50210430	Spring	1 pc
021		T50213210	Detent cover	1 pc
022		T50213220	Reverse valve	1 pc
023		T50213250	O-ring AS-568	1 pc
024		T50213240	Valve body	1 pc
025		T50213230	O-ring P-12.5	1 pc
026		T50213260	O-ring P-4	1 pc
027		T50213270	Valve stem	1 pc
028		T50213370	Pin 2.5x22	1 pc

No.	KT-Code	Part no.	Description	Required Q'ty
029		T30706530	Housing	1 pc
030		T50213300	Detent pin	1 pc
031		T50213310	Spring	1 pc
032		T50213320	Set screw M5x3x2x2.3	1 pc
033		T50210440	Silencer	1 pc
034		T50410450	Screw 3x8	2 pcs
035	T112-2878	T50210460	Air inlet bushing	1 pc
036		T50210500	Silencer material	1 pc
037		T50213280	Spring pin 3x22	1 pc
038		T50213050	Bearing 6201ZZ	1 pc
039	T112-4023	T30706020	Guide pin	1 pc
040	T112-4022	T30706360	Guide pin spring	1 pc
041		T30706150	Spacer	1 pc
042		T30706140	Adjust nut	1 pc
043		T30706130	Spring seat	1 pc
044		T30706380	Clutch spring	1 pc
045		T30706120	Thrust washer	1 pc
046		T30706400	Steel ball 1/4	4 pcs
047		T30706110	Clutch joe	1 pc
048		T30706100	Spindle	1 pc
049		T30706420	Steel ball 1/8	1 pc
050		T30706270	Retaining ring	1 pc
051		T30706090	Drive dog	1 pc
052		T30706180	Clamp nut	1 pc
053		T50213420	Bake washer	1 pc
054		T50712330	Spanner 17mm	1 pc
055		T30706280	Allen wrench	1 pc